



Woodleigh Caravan Park, Cheriton, Bishop, Exeter,

- 2022 Willerby Dorchester
- Site Fees FREE Until January 2027
 - Turn-Key Property
 - Exclusive Development
- Open All Year Road
- No Age Limit On Caravans
 - Pet Friendly
- Other Homes are Available on this Park, Contact Us for More Information & Prices

Contact Annette & Team Tempo **NOW**

01772 633399
info@tempoestates.co.uk
www.tempoestates.co.uk

Woodleigh Caravan Park, Cheriton Bishop, Exeter EX6

611

Willerby Dorchester at Woodleigh Caravan Park – Your Next Chapter Awaits! Discover the exceptional lifestyle offered by this stunning Willerby Dorchester Lodge. This charming residence immediately impresses with its quality and thoughtful design, promising a truly comfortable living experience for those seeking a secure investment in a beautiful setting. Nestled within an exclusive development, this two-bedroom Lodge boasts breath-taking Countryside and Lake Views, offering a tranquil retreat to return to every day. Enjoy the convenience of designated parking and the year-round benefits of a 12-Month Park license, ensuring Woodleigh is your home whenever you wish. Step inside to find a residence that is fully furnished and ready for you to move straight in. Features include essential double glazing for year-round comfort and the added luxury of an en-suite bathroom attached to one of the two spacious bedrooms. Outside, the private decking area is perfect for soaking up the scenic surroundings. Embrace a relaxed, high-quality lifestyle in this superb home. No lease length on these properties.

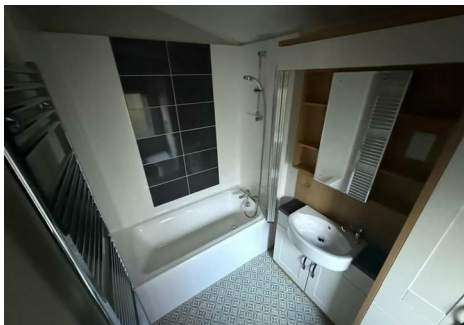
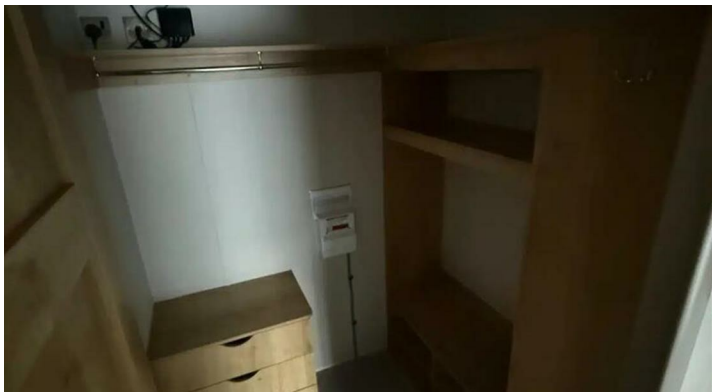


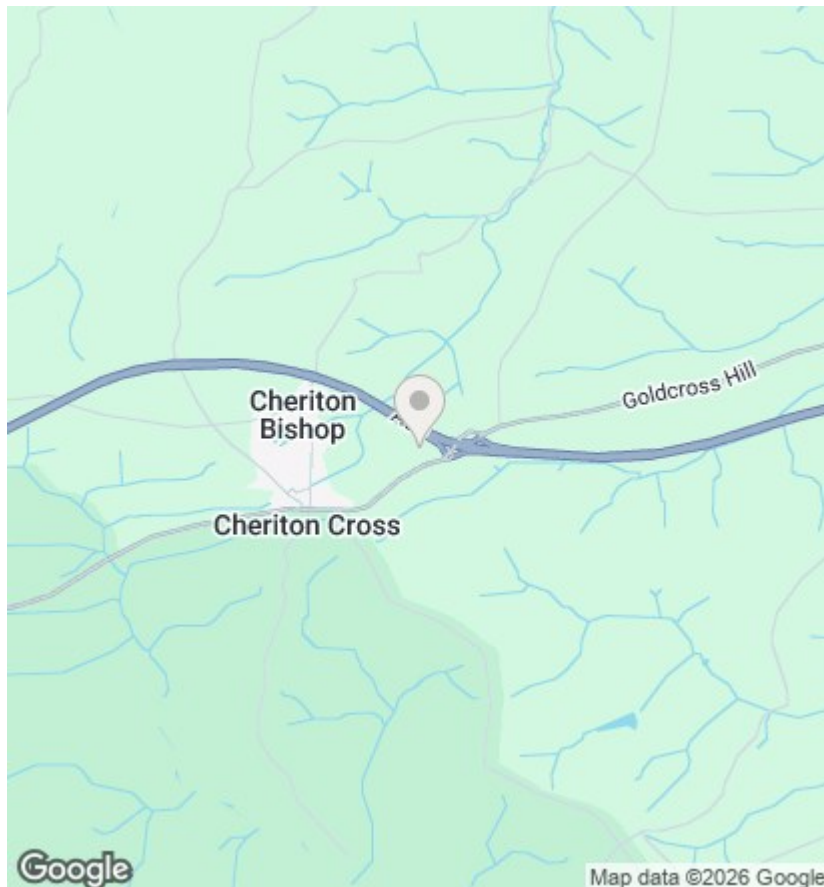
Council Tax
Band: Exempt

Tenure: Leasehold









Notice

Please note we have not tested any apparatus, fixtures, fitting or services. Interested parties must undertake their own investigation into the working order of these items. All measurements stated in this brochure are approximate and photographs provided are for guidance only.

Viewings

Viewings by arrangement only. Call 01772 633399 to make an appointment.

EPC Rating:

Misrepresentation Act 1967:- tempoleisure.co.uk looks to ensure that all our sales particulars are accurate and reliable, we believe the above details to be correct but their accuracy cannot be guaranteed and they do not constitute any part of an offer or contract. Any intending purchasers or lessees must satisfy themselves by inspection or otherwise as to the correctness of each statement in these particulars before entering into any formal contract to purchase or to rent this property.

Contact Annette & Team Tempo **NOW**

01772 633399
info@tempoestates.co.uk
www.tempoestates.co.uk